

Description:

Hyload TOM (Trowel On Membrane)

A high quality, moisture curing elastomeric waterproofing and sealant designed to fill, seal and level grout lines, voids, seams and surface damage on construction materials prior to application of liquid waterproofing.



Product Highlights:

- Solvent free
- High solids will not shrink
- Bonds to green concrete
- Non flammable
- Very low odor
- Conforms to OTC Rule for Sealants
- Meets requirements of California Regs: CARB and SCAQMD
- This product does not contain cancer causing chemicals listed in California Proposition 65
- NAHB Model Green Home Building Guidelines: 5 Global Impact Points
- VOC Content: Less than 36 grams /liter ASTM D2369 EPA Method 24 (Tested at 240° F / 115°C)
- Moisture cure
- No outgassing on damp surfaces
- Wet film thickness equals dry film thickness
- Very fast setting - Two coats in one day
- May be used in confined spaces
- Conforms to USDA Requirements for Non-food Contact

- **For specifics consult the Hyload Technical Department.**

Coverage Rate:

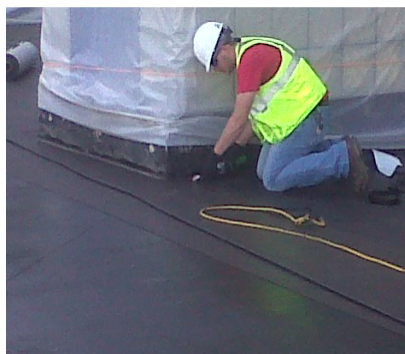
- 1 mil = 1,620 SF per gallon
- 30 mils = 54 SF per gallon
- 60 mils = 27 SF per gallon
- 120 mils = 13 SF per gallon
- 180 mils = 9 SF per gallon

Cure Time

- Tack free 1 hr. +/- 15 minutes
- Full cure 24 hrs.

Shelf Life

- Twelve months from date of manufacture in pails, six months in tubes when stored at 70°F / 21°C with 50% relative humidity. High temperature and high relative humidity may significantly reduce shelf life.



Applications:

- Above grade waterproofing (with UV protection course)
- Below grade waterproofing
- Horizontal between slab underlayment
- Plaza Decks
- Balconies
- Tunnels
- Roofing repair
- Planter boxes

Packaging:

- Black Colored
- 5 Gallon Pails 36 Pails per pallet
- 20 oz. sausages

Substrates:

- The substrate should be smooth, level, clean, and dry.
- Include but not limited to Wood, Masonry, Steel, Aluminum, Stone, Galvanized Metal, Asphalt BUR, Modified Bitumen, EPS Protection Board, Styrofoam Protection Board, and Concrete.
- Hyload TOM can be installed directly over existing Hyload membranes without priming. Priming with Hyload Asphalt Primer or Hyload HyPrime is recommended on all other substrates.

*Test and evaluate to ensure adequate adhesion

Typical Physical Properties ASTM C836

Grade	Trowel/ Gun Applied	
Viscosity	1,000,000 cp +/- 200,000 cp	Brookfield RVF TE Spindle, 4 RPM, 73°F (23°C)
Density	13.1 +/- 0.2 lbs per gallon	ASTM D1475
Tack Free Time	60 min +/- 15 min	
Solid Content by Weight	98%	ASTM C1250
Hardness Shore A	25-30	ASTM D2240
Elongation at break	300-350%	ASTM D412
Shear Strength	120-140 psi	ASTM D1002
Tensile Strength	100-125 psi	ASTM D412
Low Temperature Flex	-20 F Pass 1/4 mandrel	ASTM C794
Shrinkage	No visible shrinkage after 14 days	
Service Temperature	-40°F to 200°F (-40°C to 93°C)	

Limitations:

- Hyload TOM is not intended for use with a permanently exposed surface
- In areas where prolonged chemical exposure is anticipated, contact Technical Services for recommendations.
- Do not use in above grade applications without a protective UV barrier.
- If Hyload TOM is to be coated with a UV barrier, test for asphalt staining before coating.
- Do not store in elevated temperatures.
- Remove all coatings and sealants before application.
- Do not apply at temperatures below 35°F (2°C).
- DO NOT THIN WITH SOLVENTS, WATER, OR OTHER FOREIGN MATERIAL
- DO NOT USE AN ASPHALT PRIMER



Warranty:

Hyload makes available to its customers several high performance product warranties. Contact Hyload's Corporate Office directly for details. A standard warranty is 10 years.